

I'LL SEE YOU IN MY DREAMS

THIS CLASSIC JAZZ STANDARD IS A GREAT TUNE WITH A VERY SINGABLE MELODY. TRY TO INTERNALIZE THE MELODY BY PLAYING THE CHORDS AND SINGING THE MELODY. CREATING CHORD MELODIES IS ALSO A GREAT WAY TO LEARN AND RETAIN MELODIES. BE AWARE WHAT SCALE DEGREE THE MELODY IS WHEN CREATING CHORD MELODIES AND THIS INFORMATION WILL BE USEFUL WHEN TRANSPOSING OR SUPERIMPOSING MELODIC IDEAS INTO THESE CHORD CHANGES.

THE CHORD PROGRESSION IS PRETTY UNIQUE IN THAT IT STARTS ON THE IV CHORD WHICH IS B FLAT MAJOR, OR IN THIS CASE B FLAT MAJOR 6. THE PROGRESSION CAN BE A BIT CHALLENGING TO SOLO OVER AND MAY TAKE SOME STUDYING BEFORE FEELING COMFORTABLE WITH IT. LEARN FRANK'S SOLO AND ANALYZE WHAT HE PLAYS TO HELP YOU FORM YOUR OWN IDEAS AND HELP YOU UNDERSTAND HOW TO PLAY THROUGH THE CHANGES. TAKE YOUR TIME WITH THIS ONE AND HAVE FUN!

ARRANGEMENT:

1ST CHORUS - PLAY MELODY, CHORDS OR CHORD MELODY WITH FRANK AT LETTER (A)

2ND AND 3RD CHORUS - PLAY SOLO AT LETTER (B)

4TH CHORUS - FRANK'S SOLO AT LETTER (C)

5TH CHORUS - TRADE 4S WITH FRANK AT LETTER (D)

6TH CHORUS - TRADE 4'S ON MELODY OR WITH FRANK AT LETTER (E). TRY TO HAVE THE MELODY MEMORIZED OR IMPROVISE OFF THE MELODY AT THIS POINT. REFER BACK TO LETTER (A) TO STUDY THE MELODY. WATCH FOR TAG ENDING AT LETTER (F)

I'LL SEE YOU IN MY DREAMS

B♭MA5G

B♭MING

Handwritten musical notation for the first system, including a circled 'A' above the first measure. The notation is on a treble clef staff with a key signature of one flat and a common time signature. The notes are: G4, A4, B4, G4, F4, G4, A4, B4, G4, A4. The guitar fretboard below shows fingerings: 6, 3, 6, 8, 10, 8, 8, 9.

FMA5

E7

FMA5

Handwritten musical notation for the second system. The notes are: G4, A4, B4, G4, F4, G4, A4, B4, G4, A4. The guitar fretboard below shows fingerings: 10, 8, 10, 12, 10, 5.

D7

Handwritten musical notation for the third system. The notes are: G4, A4, B4, G4, F4, G4, A4, B4, G4, A4. The guitar fretboard below shows fingerings: 10, 7, 9, 7, 12, 10, 10, 6, 10.

G7

C7

F7

Handwritten musical notation for the fourth system. The notes are: G4, A4, B4, G4, F4, G4, A4, B4, G4, A4. The guitar fretboard below shows fingerings: 7, 9, 10, 10, 8, 10, 8, 6.

I'LL SEE YOU IN MY DREAMS

Bb MA7b6

Bb MIN6

Musical notation for the first system. The treble clef staff contains notes: Bb4 (quarter), Bb4 (quarter), Bb4 (quarter), Ab4 (quarter), Gb4 (quarter), Gb4 (quarter), Gb4 (quarter), Ab4 (quarter), Bb4 (quarter), Bb4 (quarter), Bb4 (quarter), Bb4 (quarter). The guitar fretboard below shows fingerings: 3, 6, 8, 10, 8, 9, 10.

F MA7

E7

F MA7

Musical notation for the second system. The treble clef staff contains notes: F4 (quarter), F4 (quarter), F4 (quarter), F4 (quarter), F4 (quarter), F4 (quarter), F4 (quarter), F4 (quarter), F4 (quarter), F4 (quarter), F4 (quarter), F4 (quarter). The guitar fretboard below shows fingerings: 8, 10, 12, 10.

D7

A7

D MIN

F7

Musical notation for the third system. The treble clef staff contains notes: D4 (quarter), D4 (quarter), D4 (quarter), D4 (quarter), D4 (quarter), D4 (quarter), D4 (quarter), D4 (quarter), D4 (quarter), D4 (quarter), D4 (quarter), D4 (quarter). The guitar fretboard below shows fingerings: 11, 10, 8, 7, 10, 8, 10, 9, 8.

Bb MA7b6

Bb MIN6

C7

F MA7

C MIN7

F7

Musical notation for the fourth system. The treble clef staff contains notes: Bb4 (quarter), Bb4 (quarter), Bb4 (quarter), Ab4 (quarter), Gb4 (quarter), Gb4 (quarter), Gb4 (quarter), Ab4 (quarter), Bb4 (quarter), Bb4 (quarter), Bb4 (quarter), Bb4 (quarter). The guitar fretboard below shows fingerings: 7, 6, 8, 10, 6.

I'LL SEE YOU IN MY DREAMS

SOLO B^bMAS6

B^bMING



FMA5

E7

FMA5



D7



G7

C7

F7



I'LL SEE YOU IN MY DREAMS

BbMA7b6

BbmiNG



FMA7

E7

FMA7



D7

A7

Dmin

F7



TO FRANK'S
SOLO

BbMA7b6

BbmiNG

C7

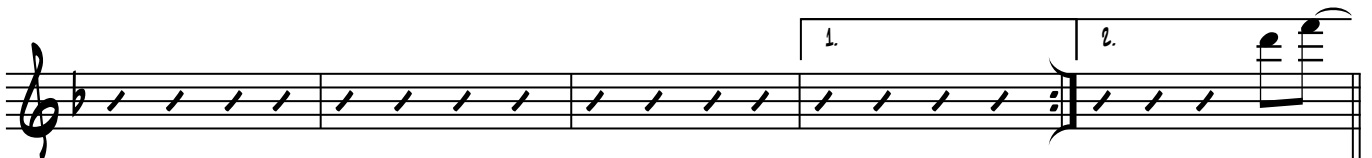
FMA7

Cmin7

F7

Cmin7

F7



10 13

I'LL SEE YOU IN MY DREAMS

FRANK'S
SOLO

B♭ MA7♭6

B♭ MIN6

First system of guitar tablature. The top staff shows a melodic line in B-flat major with a key signature of one flat. The bottom staff shows the corresponding fret numbers. A circled 'C' is in the top left corner. A '1/4' note with an arrow points to the 8th fret in the second measure.

F MA7

E7

F MA7

Second system of guitar tablature. The top staff continues the melodic line. The bottom staff shows fret numbers. A triplet of eighth notes is marked with a '3' over the notes in the fourth measure.

D7

Third system of guitar tablature. The top staff continues the melodic line. The bottom staff shows fret numbers. A circled 'C' is in the top left corner.

G7

C7

F7

Fourth system of guitar tablature. The top staff continues the melodic line. The bottom staff shows fret numbers. A triplet of eighth notes is marked with a '3' over the notes in the second measure.

I'LL SEE YOU IN MY DREAMS

Bb MA7b6

Bb MIN6

F MA7

E7

F MA7

D7

A7

D MIN

F7

Bb MA7b6

Bb MIN6

F MA7

C MIN7

F7

TO

TRADING 4s

I'LL SEE YOU IN MY DREAMS

TRADE 45 **B^bMA7^b**
SOLO

B^bMIN6

FRANK SOLO

FMA7

E7

FMA7

SOLO

FRANK SOLO

G7

C7

F7

I'LL SEE YOU IN MY DREAMS

SOLO

Bb MA7b6

Bb MING

FRANK SOLO

F MA7

E7

F MA7

SOLO

D7

A7

D MIN

F7

FRANK SOLO

Bb MA7b6

Bb MING

C7

F MA7

C MIN7 F7

TRADE MELODY

I'LL SEE YOU IN MY DREAMS

Bb MA7b6

Bb MIN6

FRANK

E

F MA7

E7

F MA7

D7

YOU

G7

C7

F7

FRANK

Bb MA7b6

Bb MIN6

Handwritten musical notation for 'FRANK'. The first system shows a treble clef with a key signature of one flat. The melody consists of chords: Bb MA7b6, Bb MA7b6, Bb MA7b6, Bb MA7b6, Bb MA7b6, and Bb MIN6. The bass line shows fingerings: 3 5 7, 3 7 10, 3 7, 5 9 11, 3 6 6.

E7

F MA7

Handwritten musical notation for 'FRANK' continuation. The second system shows chords: Bb MA7b6, Bb MA7b6, E7, E7, F MA7, and a melodic phrase. The bass line shows fingerings: 5 6 9, 8 10 12, 10 12 14, 12 12 12, 10 13 14, 1 2 3 4, 7 7 6, 6 5 4.

YOU

D7

A7

D MIN

F7

Handwritten musical notation for 'YOU'. The staff shows a treble clef with a key signature of one flat. The melody consists of slanted lines representing rests. The bass line shows slanted lines representing rests.

ENDING

Bb MA7b6

Bb MIN6

Bb MA7b6

Bb MIN6

Handwritten musical notation for 'ENDING'. The first system shows a treble clef with a key signature of one flat. The melody consists of chords: Bb MA7b6, Bb MA7b6, Bb MIN6, Bb MA7b6, Bb MA7b6, Bb MIN6, Bb MA7b6, Bb MIN6. The bass line shows fingerings: 3 5 7, 6 7 10, 8 6 8, 10, 3 5 7, 6 7 10, 8 6 8, 10.

Bb MA7b6

Bb MIN6

C7

F MA7

F7

Bb

B°7

F#9

Handwritten musical notation for 'ENDING' continuation. The second system shows chords: Bb MA7b6, Bb MIN6, C7, F MA7, F7, Bb, B°7, and F#9. The bass line shows fingerings: 3 5 7, 6 7 10, 8 6 8, 10 8 11, 9 11, 9 11, 6 7 9, 8 9 11.