


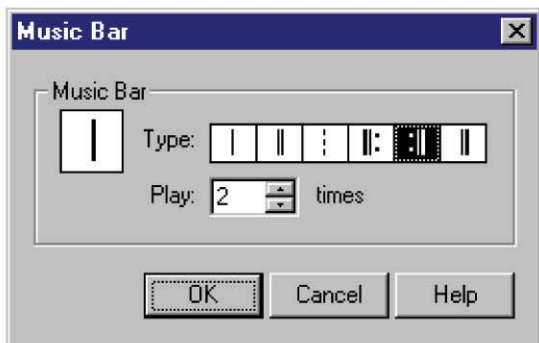
# Music Bars

Music bars (bar-lines) are used to divide the music into measures. Music bars can be placed anywhere in the section where there is no other music data (you can't insert bars overtop of notes). Music bars have a section scope. That is, if you add a music bar to one staff in a section, they are drawn for all staves in the section. If you remove a music bar from a staff, it removes it from all staves in the section (at that particular position). To insert a music bar at the current position, select the **Music Bar** menu item from the **Music Symbols** menu.

## \*\* Important Update For Version 1.5 \*\*

**Note:** At the start of every section there is now a "hidden" music bar. You should notice that the music bar toolbar button is depressed when you move the position indicator to the first position in a section. This is signalling to the user that a bar already exists at the position. When this "starting bar" is set to a normal bar type, nothing will be displayed. If you wish to "add" a repeat start bar to the start of the section, it is now achieved by editing this starting music bar. Simply click on the music bar toolbar button to do this. Once the starting bar is set, it will automatically shift the starting position to the right, just as it would for a time or key signature

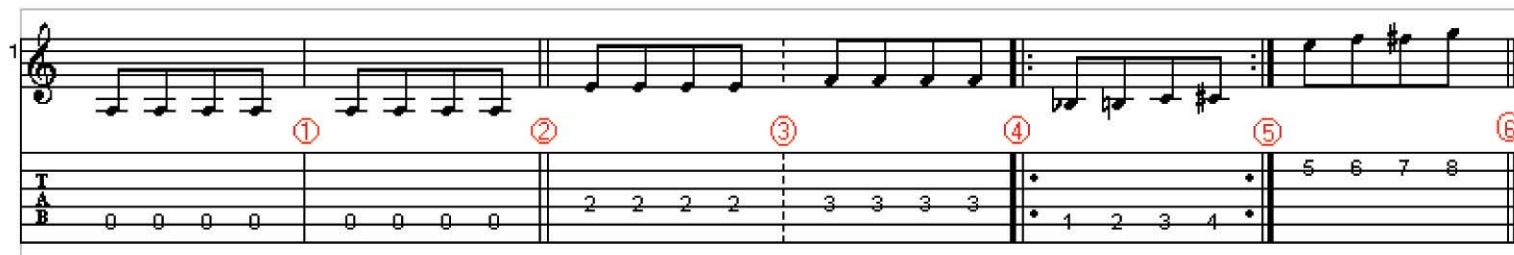
**Note:** To change the music bar at the end of a section, move the mouse cursor over the right margin of the section. You should see the cursor change to . When the cursor changes, click the left mouse button). The **Music Bar** dialog box will appear:




The Music Bar dialog box

Simply click on the appropriate music bar from the list, and then click OK. The music bar will be inserted at the current position in the score.

There are six types of music bars that can be selected, each shown below, with a description following:



Music Bar Types

Diagram # - Bar Type	Description/Use
1 - Standard Bar	Used in most cases to separate measures
2 - Double Bar (Break)	Used to represent the start of a new part/passage of a score (such as a verse, chorus, bridge). It is also used when a key signature change occurs somewhere other than the start of a new section.
3 - Free Time Bar	Used in place of standard bar when music tempo is notated as "Free Time"
4 - Repeat Start Bar/Leave Open	<ul style="list-style-type: none"> <li>Used to mark the start of a music passage that is to be repeated. You must have a Repeat End bar for every Repeat Start bar.</li> <li>A Repeat Start bar cannot be placed at the end of a section. In it's place, a Leave Open bar type is used. This will draw no bar at all. This is commonly used when a key or time signature change occurs at the end of a section:</li> </ul>  <p>End of section with bar left open due to key and time signature change</p>

5 - Repeat End Bar	Used to mark the end of a music passage that is to be repeated. By default, a passage is to be played twice. If there is a number above the Repeat End bar in the format "nx", then you are to play the passage that n times. ie. If there is a 4x, this equates to "Play 4 times".
6 - Double Bar (Ending)	Used to notate the end of the score. Should be placed at end of last section in score only.